

Product Brief 2012

Power Factor Correction

PF Controller BR7000 for Power Quality Solutions

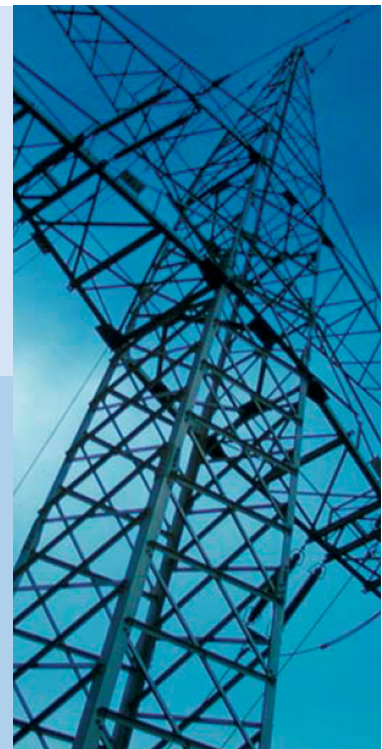
The power factor controller BR7000 is a follow-up development of the well-proven BR6000 series, offering a broad range of new characteristics and benefits. It can be used as a PF controller as well as a grid measuring device. The BR7000 features 15 relay outputs for the steps and three message/alarm relays. These 15 outputs are programmable for different applications, e.g.

- 15 conventional steps, each for one three-phase capacitor.
- 15 steps for single-phase capacitors. Each output will switch a single-phase capacitor to N, usually 5 per phase. Balancing of the grid is possible.
- Mixed operation, e.g. 6 single-phase capacitors (2 per phase) for balancing plus 9 steps for conventional compensation (three-phase capacitors).

- Version BR7000-HD with OLED-display and larger temperature range of $-40 \dots +80 \text{ }^{\circ}\text{C}$ for tough ambient conditions is also available.

The direct connection to a USB port of a PC via USB-adaptor (Interface RS485) offers further benefits with the Windows software BR-Soft. The program allows a convenient visualization of grid parameters, analysis of recorded values and the graphical evaluation of all data received. Administration of several PF controllers is another benefit.

PQS



PF Controller BR7000

Features and benefits

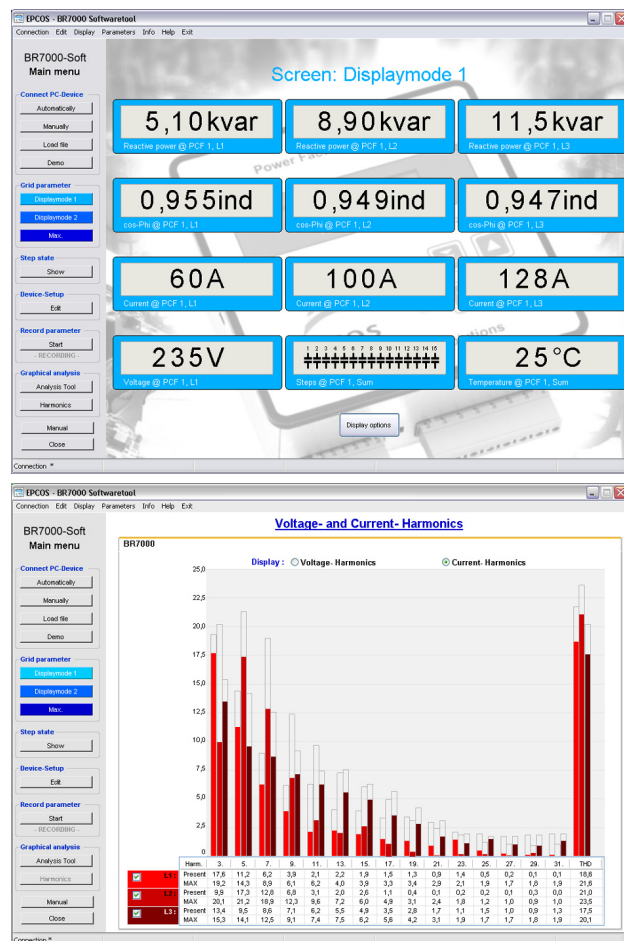
- Three-phase measuring and controlling
- Operating voltage range: 110 ... 230 V AC
- Enlarged measuring voltage range:
3 • 30 ... 440 V AC (L-N) / 690 V AC (L-L)
- Measuring current: 3 • X:1A / X:5A
- LCD full graphic display: 128 x 64 dots, 8 lines;
BR7000-HD with OLED display
- Self explanatory menu navigation in five languages:
DE/EN/ES/RU/TR
- HELP button for interactive help text
- 15 switching outputs
- Three additional alarm/message relays
- Two isolated interfaces
- Detailed error messages with time stamp
- Automatic initialization/test run
- Automatic and manual operation, service operation,
expert mode
- Three-phase and single-phase controlling, mixed
mode possible
- Display and storage of maximum values, switching
operations and operating time
- Display of date and time
- Time-controlled functions possible by internal timer
- Oscilloscope mode for graphical display
- Quick programming
- Panel-mounted instrument
- Dimensions: 144 x 144 x 60 mm
- Three-phase measuring and display of following
grid parameters: voltage, current, frequency,
energy, real power, reactive power, apparent power,
power factor, missing reactive power, harmonic of
voltage and current (up to 31st),
THD-V, THD-I, temperature

Ordering code:

BR7000 B44066R7415E230
BR7000-HD B44066R7515E230

Accessories for BR7000: BR-Soft

- Connection to RS485 bus
- Administration of several PF controllers possible
- Convenient analysis of recorded values
- Direct connection to USB port of PC via
USB adapter
- CD-ROM included in the delivery
- BR-Soft for PC operating system Windows



Important information: Some parts of this publication contain statements about the suitability of our products for certain areas of application. These statements are based on our knowledge of typical requirements that are often placed on our products. We expressly point out that these statements cannot be regarded as binding statements about the suitability of our products for a particular customer application. It is incumbent on the customer to check and decide whether a product is suitable for use in a particular application. This publication is only a brief product survey which may be changed from time to time. Our products are described in detail in our data sheets. The Important notes (www.epcos.com/ImportantNotes) and the product-specific Cautions and warnings must be observed. All relevant information is available through our sales offices.